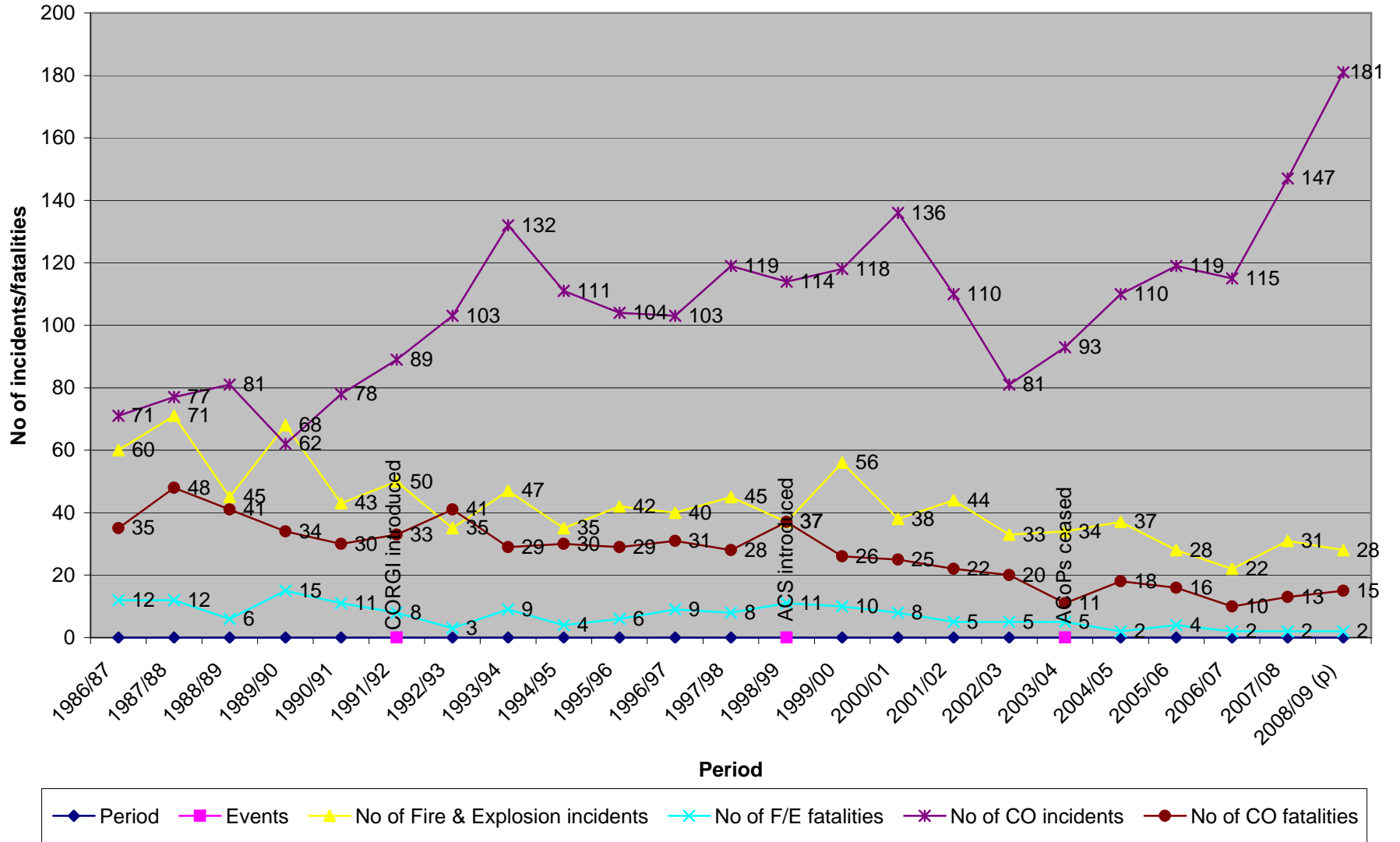


## Gas Safety Statistics



## GAS SAFETY STATISTICS

### GAS RELATED INCIDENTS REPORTED UNDER RIDDOR

	86/ 87	87/ 88	88/ 89	89/ 90	90/ 91	91/ 92	92 /93	93/ 94	94/ 95	95/ 96	96/ 97	97/ 98	98/ 99	99/ 00	00/ 01	01/ 02	02/ 03	03/ 04	04/ 05	05/ 06	06/ 07	07/ 08	08/ 09 (p)
No of F/E incidents	60	71	45	68	43	50	35	47	35	42	40	45	37	56	38	44	33	34	37	28	22	31	28
No of F/E fatalities	12	12	6	15	11	8	3	9	4	6	9	8	11	10	8	5	5	5	2	4	2	2	2
No of CO incidents	71	77	81	62	78	89	103	132	111	104	103	119	114	118	136	110	119	93	110	119	115	147	181
No of CO fatalities	35	48	41	34	30	33	41	29	30	29	31	28	37	26	25	22	20	11	18	16	10	13	15

p: provisional figures